

DRAWING SUBJECT
TO CHANGE
WITHOUT NOTICE
DO NOT SCALE

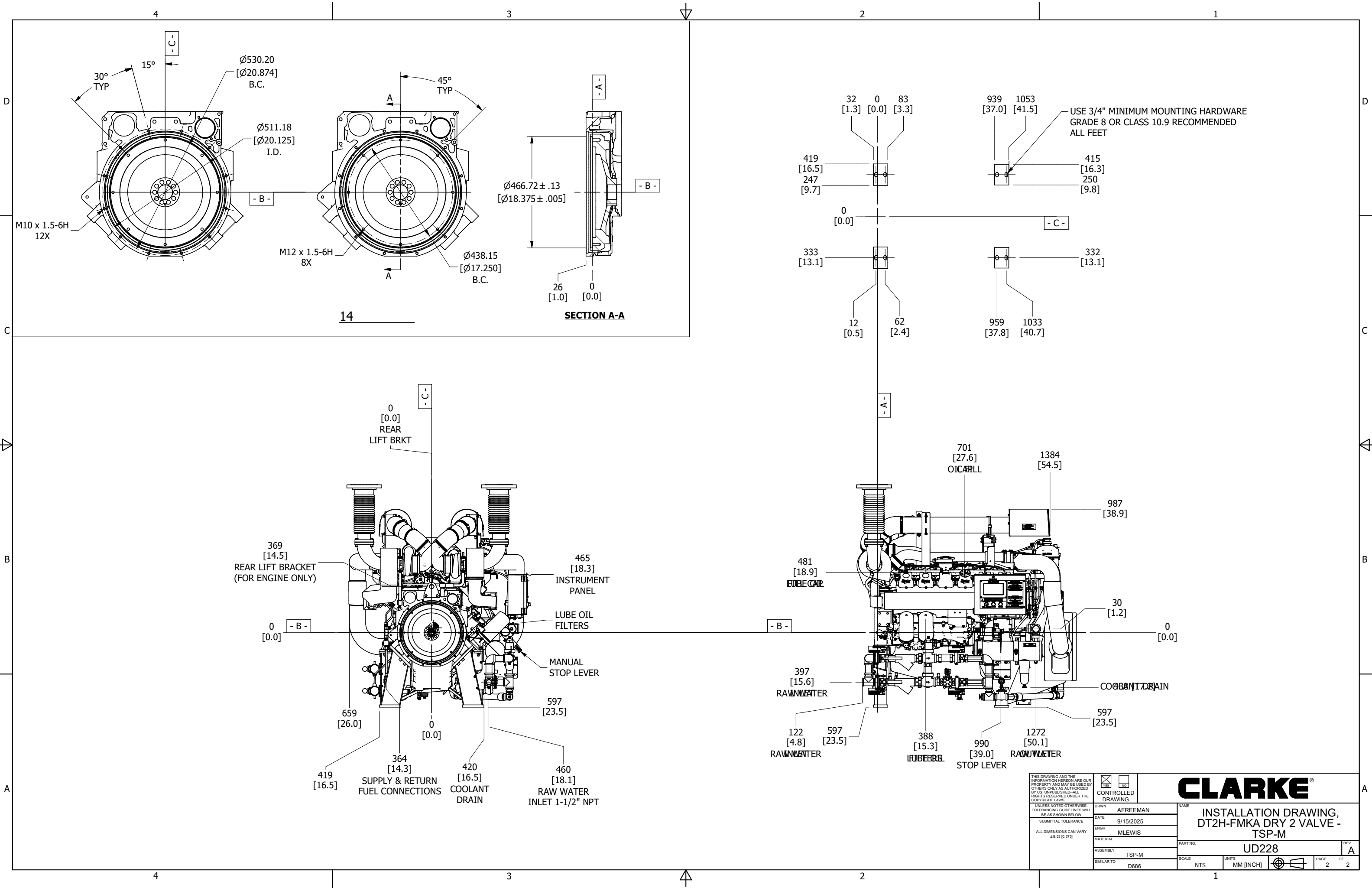
CONTROLLED DRAWING

THIS IS A REGISTERED PART WITH A THIRD PARTY
AGENCY FOR USE ON A PRODUCT. NO SUBSTITUTIONS
ARE ALLOWED. CONSULT ENGINEERING PRIOR TO AND
REGARDING ANY CHANGE.

FOR ENGINE SPECIFIC OPTIONS
SEE www.clarkefire.com

REV	DESCRIPTION	ECN#	DWN	APVD	DATE
A	ISSUED ENGINEERING DRAWING	6790	AJF	MLL	16SEP25

THIS DRAWING AND THE INFORMATION HEREON ARE OUR PROPERTY AND MAY BE USED BY OTHERS ONLY AS AUTHORIZED BY US. UNPUBLISHED-ALL RIGHTS RESERVED UNDER THE COPYRIGHT LAWS.		UNLESS NOTED OTHERWISE TOLERANCING GUIDELINES WILL BE AS SHOWN BELOW		ALL DIMENSIONS CAN VARY ±9.53 [0.375]	
DRAWN AFREEMAN		DATE 9/15/2025		ENGR MLEWIS	
SUBMITTAL TOLERANCE:		MATERIAL TSP-M		SIMILAR TO D686	
NAME INSTALLED DRAWING, DT2H-FMKA DRY 2 VALVE - TSP-M		PART NO. UD228		REV A	
SCALE NTS		UNITS MM [INCH]		PAGE 1 OF 2	



THIS DRAWING AND THE INFORMATION HEREON ARE OUR PROPERTY AND MAY BE USED BY OTHERS ONLY AS AUTHORIZED BY US. UNPUBLISHED - ALL RIGHTS RESERVED UNDER THE COPYRIGHT LAWS.				<input checked="" type="checkbox"/> CONTROLLED DRAWING		CLARKE®	
UNLESS NOTED OTHERWISE, TOLERANCING GUIDELINES WILL BE AS SHOWN BELOW.				DRWN	AFREEMAN	NAME	
SUBMITTAL TOLERANCE:				DATE	9/15/2025	DATE	
ALL DIMENSIONS CAN VARY ±.03 [0.375]				ENGR	MLEWIS	ENGR	
				MATERIAL		MATERIAL	
				ASSEMBLY	TSP-M	ASSEMBLY	
				SIMILAR TO	D686	SIMILAR TO	
				PART NO.		REV	
				UD228		A	
				SCALE	NTS	UNITS	MM [INCH]
				PAGE 2		OF 2	