





4

3

2

1

DATUMS:

- A- - MOUNTING FACE OF FLYWHEEL
- B- - ENGINE CRANKSHAFT HORIZONTAL 
- C- - ENGINE CRANKSHAFT VERTICAL 
-  - CENTER OF GRAVITY
-  - CLOCKWISE (CW) ROTATION WHEN VIEWED FROM FRONT OF ENGINE

CAUTION:

ALL PLUMBING MUST BE SUPPORTED AND/OR ISOLATED SO THAT NO WEIGHT OR STRESS IS APPLIED TO ANY ENGINE COMPONENT

ATTENTION:

REFER TO THE SPECIFIC MODELS' "INSTALLATION AND OPERATION DATA" FOR INSTALLATION GUIDELINES

AVAILABLE MODELS:

DS0H-FMKA60, DS0H-FMKA68

ALL MODELS ARE TURBOCHARGED WITH RAW WATER AFTER COOLING

NOTES:

- 1) FUEL SUPPLY PIPING FROM TANK TO ENGINE SHOULD BE 3/4" MINIMUM PIPE DIAMETER
- 2) FUEL RETURN PIPING FROM TANK TO ENGINE SHOULD BE 1/2" MINIMUM PIPE DIAMETER
- 3) COOLING LOOP SHOWN IS BASED ON STANDARD CONSTRUCTION AND FM SIZING CONDITIONS

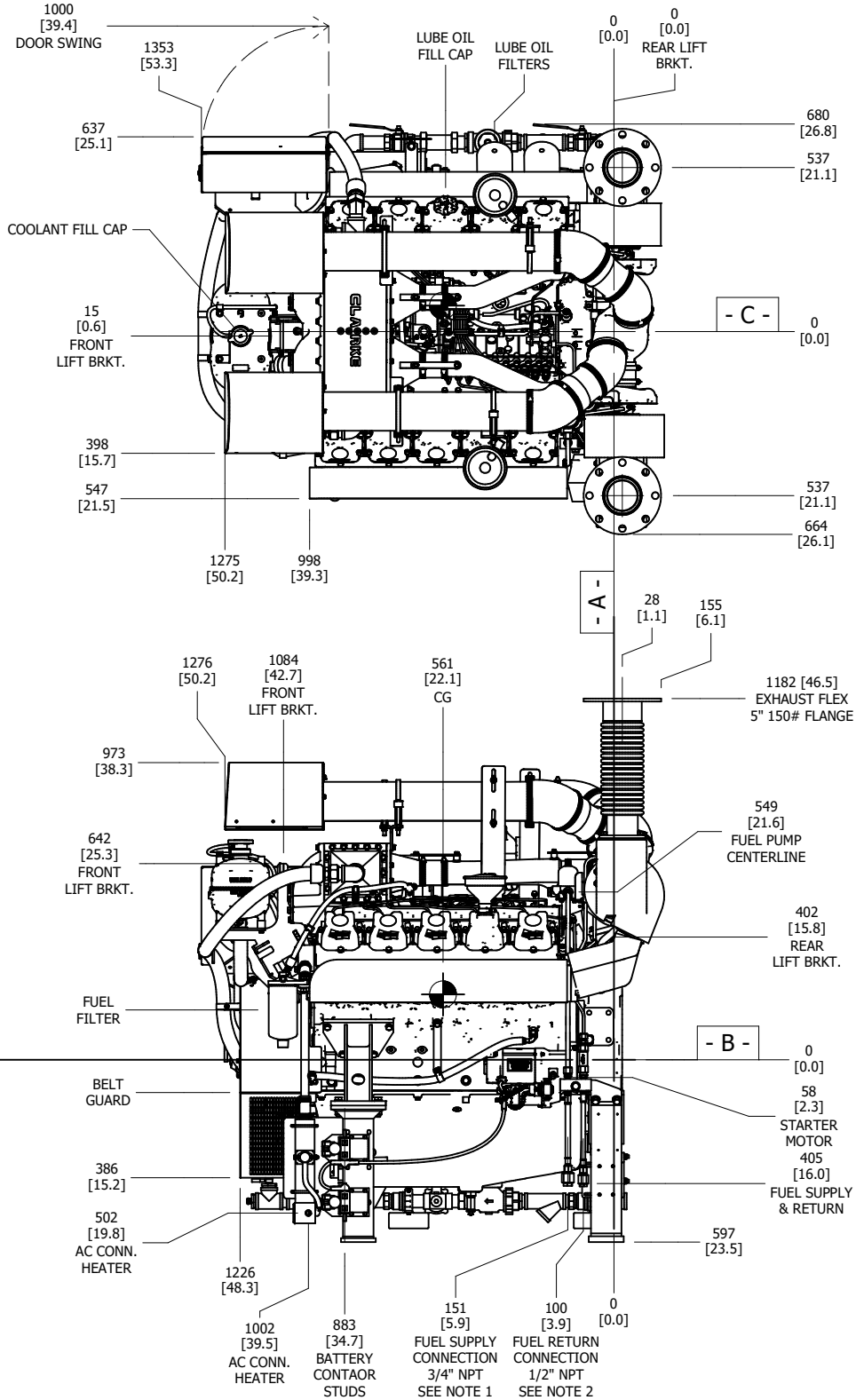
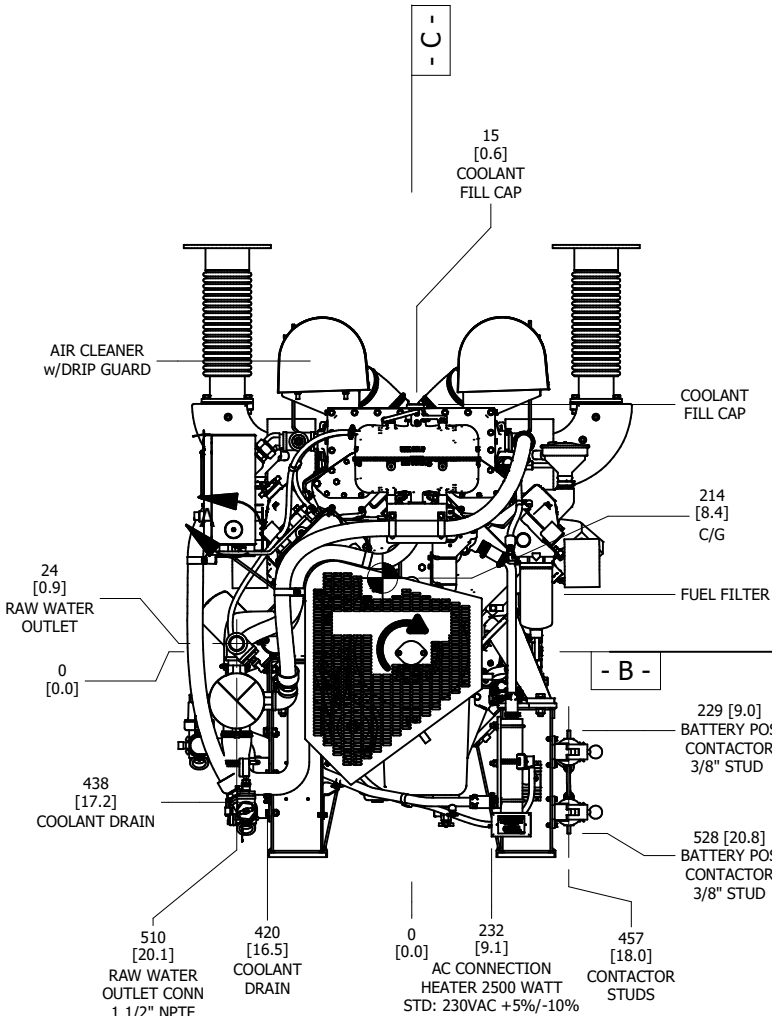
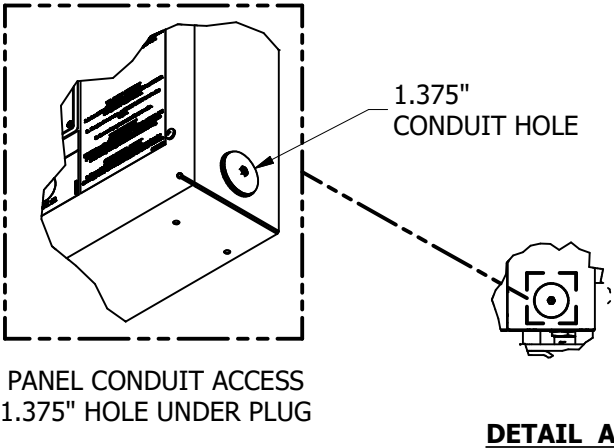
FOR ALTERNATE LOOP CONSTRUCTION (STAINLESS STEEL, SEA WATER AND HIGH PRESSURE) SIZES MAY VARY

DRAWING SUBJECT
TO CHANGE
WITHOUT NOTICE
DO NOT SCALE

CONTROLLED DRAWING

THIS IS A REGISTERED PART WITH A THIRD PARTY AGENCY FOR USE ON A PRODUCT. NO SUBSTITUTIONS ARE ALLOWED. CONSULT ENGINEERING PRIOR TO AND REGARDING ANY CHANGE.

FOR ENGINE SPECIFIC OPTIONS
SEE www.clarkefire.com



THIS DRAWING AND THE INFORMATION HEREON ARE OUR PROPERTY AND MAY BE USED BY OTHERS ONLY AS AUTHORIZED BY US. UNPUBLISHED--ALL RIGHTS RESERVED UNDER THE COPYRIGHT LAWS		<input checked="" type="checkbox"/> YES <input type="checkbox"/> NO	CONTROLLED DRAWING		CLARKE®	
UNLESS NOTED OTHERWISE, TOLERANCING GUIDELINES WILL BE AS SHOWN BELOW		DRWN AFREEMAN		NAME		
SUBMITTAL TOLERANCE		DATE 9/15/2025		PART NO. UD227		
ALL DIMENSIONS CAN VARY ± 9.53 [0.375]		ENGR MLEWIS		REV A		
		MATERIAL N/A		SCALE NTS		
		ASSEMBLY TSP-M		UNITS MM [INCH]		
		SIMILAR TO D665		PAGE 1 OF 2		

REV	DESCRIPTION	ECN#	DWN	APVD	DATE
A	ISSUED ENGINEERING DRAWING	6790	AJF	MLL	16SEP25

4

3

2

1

