

**DATUMS:**

- A- - MOUNTING FACE OF FLYWHEEL
- B- - ENGINE CRANKSHAFT HORIZONTAL
- C- - ENGINE CRANKSHAFT VERTICAL
- ☉ - CENTER OF GRAVITY
- ↻ - CLOCKWISE (CW) ROTATION WHEN VIEWED FROM FRONT OF ENGINE

**CAUTION:**

ALL PLUMBING MUST BE SUPPORTED AND/OR ISOLATED SO THAT NO WEIGHT OR STRESS IS APPLIED TO ANY ENGINE COMPONENT

**ATTENTION:**

REFER TO THE SPECIFIC MODELS' "INSTALLATION AND OPERATION DATA" FOR INSTALLATION GUIDELINES

**AVAILABLE MODELS:**

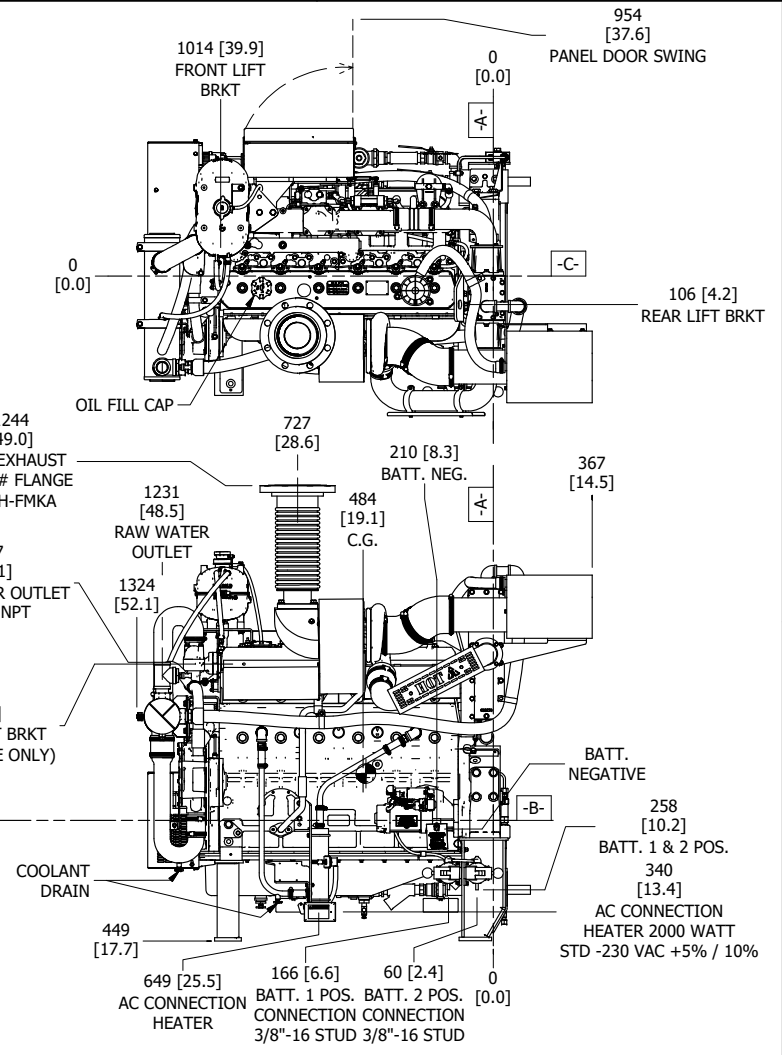
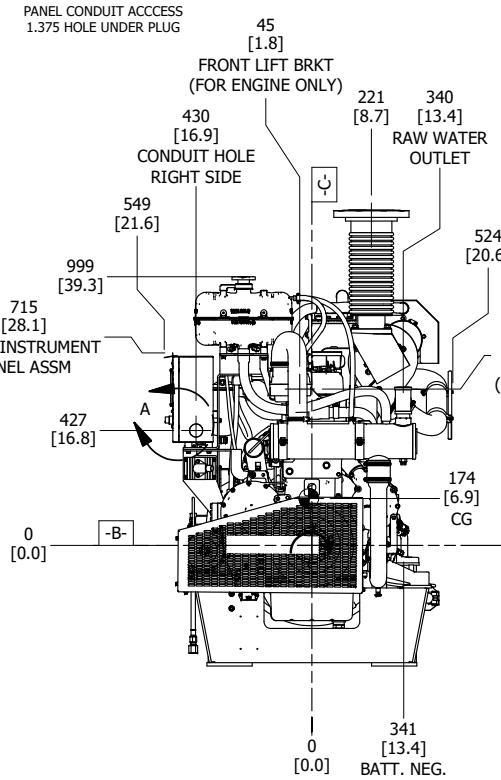
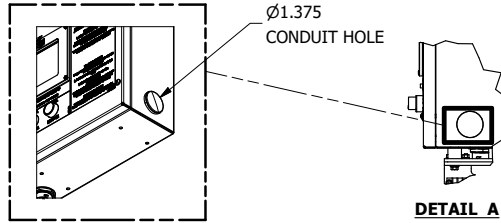
DQ6H-FMKA60, -FMKA88, -FMKA98

MODELS ARE TURBOCHARGED WITH RAW WATER AFTER COOLING

**NOTES:**

- 1) FUEL SUPPLY PIPING FROM TANK TO ENGINE SHOULD BE 1/2" MINIMUM PIPE DIAMETER
- 2) FUEL RETURN PIPING FROM TANK TO ENGINE SHOULD BE 3/8" MINIMUM PIPE DIAMETER
- 3) THE LOOP SHOWN IS BASED ON STANDARD LOOP CONSTRUCTION AND FM SIZING CONDITIONS

FOR ALTERNATE LOOP CONSTRUCTION (STAINLESS STEEL, SEA WATER, AND HIGH PRESSURE) SIZES MAY VARY



CONTROLLED DRAWING

THIS IS A REGISTERED PART WITH A THIRD PARTY AGENCY FOR USE ON A PRODUCT. NO SUBSTITUTIONS ARE ALLOWED. CONSULT ENGINEERING PRIOR TO AND REGARDING ANY CHANGE.

FOR ENGINE SPECIFIC OPTIONS  
SEE [www.clarkefire.com](http://www.clarkefire.com)

DRAWING SUBJECT  
TO CHANGE  
WITHOUT NOTICE  
DO NOT SCALE

REV	DESCRIPTION	ECN#	DWN	APVD	DATE
A	ISSUED ENGINEERING DRAWING	7152	JCA	JCA	20NOV24

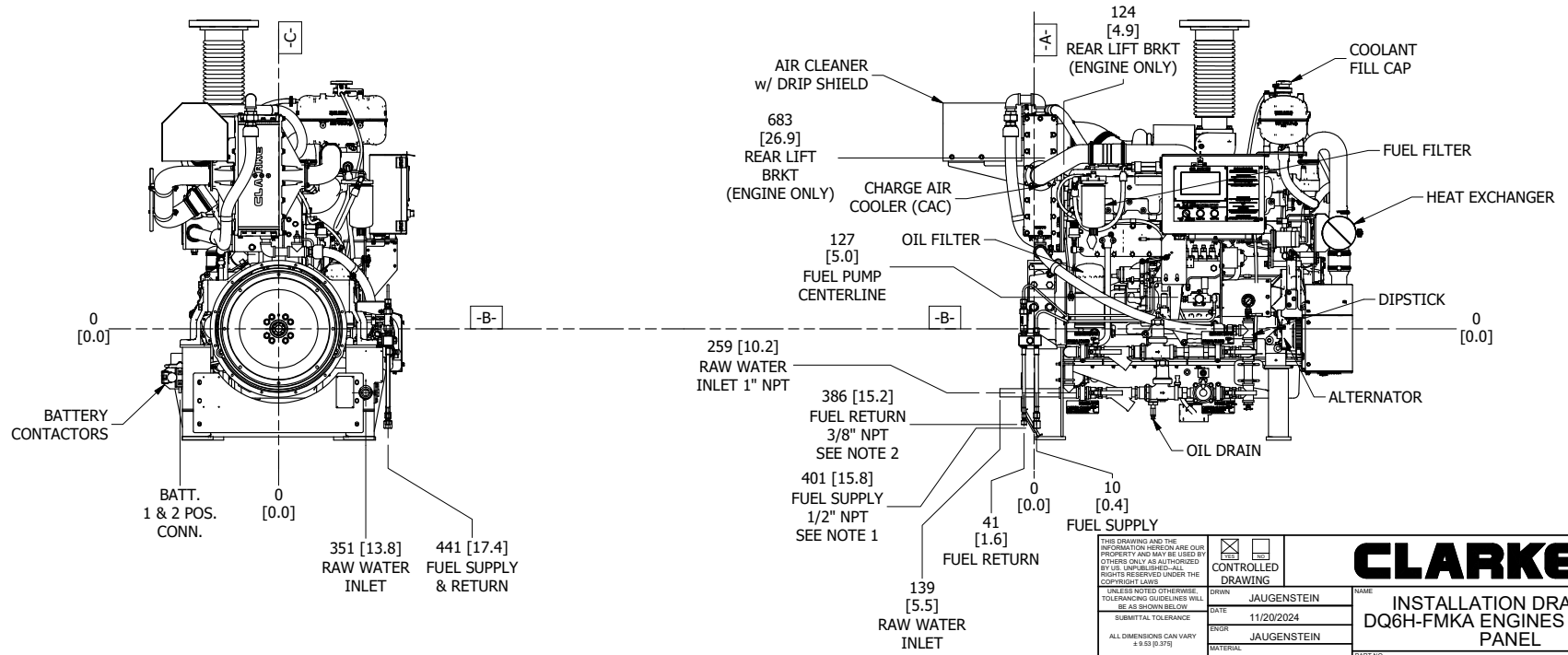
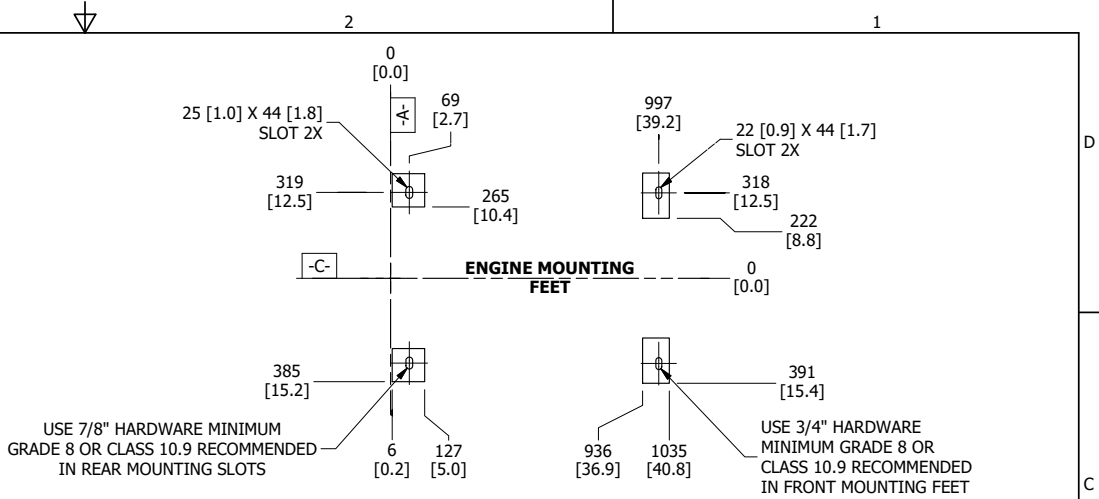
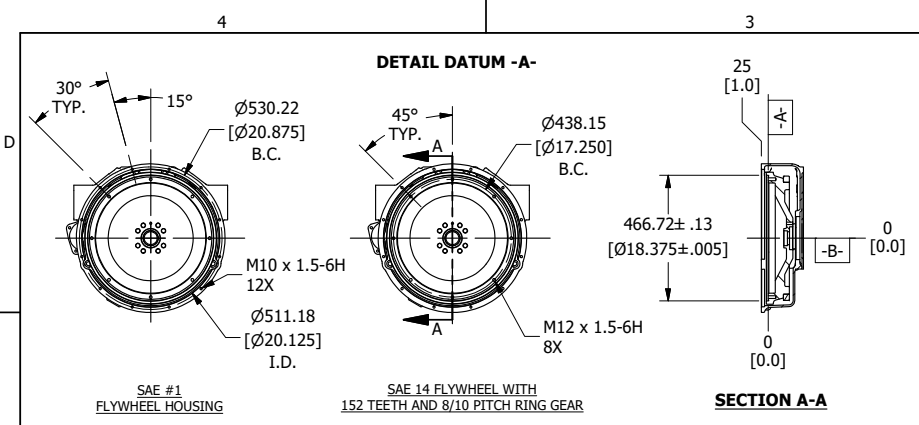
THIS DRAWING AND THE INFORMATION HEREON ARE OUR PROPERTY AND MAY BE USED BY OTHERS ONLY AS AUTHORIZED BY US. UNPUBLISHED. ALL RIGHTS RESERVED UNDER THE COPYRIGHT LAWS. UNLESS NOTED OTHERWISE TOLERANCING GUIDELINES WILL BE AS SHOWN BELOW SUBMITTAL TOLERANCE ALL DIMENSIONS CAN VARY ± 0.003 (0.015)		<input checked="" type="checkbox"/> CONTROLLED DRAWING	<b>CLARKE®</b>
DRAWN: JAUENSTEIN DATE: 11/20/2024 ENGR: JAUENSTEIN MATERIAL: ASSEMBLY: INSTALLATION DRAWING SMC PART: UD181/D899	NAME: INSTALLATION DRAWING, DQ6H-FMKA ENGINES W/ TSP-M PANEL PART NO: UD224	SCALE: NTS UNITS: MM [INCH]	REV: A PAGE: 1 OF 2

4

3

2

1



<small>THIS DRAWING AND THE INFORMATION HEREON ARE OUR PROPERTY AND MAY BE USED BY OTHERS ONLY AS AUTHORIZED BY US. UNLESS NOTED OTHERWISE, TOLERANCING GUIDELINES WILL BE AS SHOWN BELOW.</small> <small>UNLESS NOTED OTHERWISE, TOLERANCING GUIDELINES WILL BE AS SHOWN BELOW.</small> <small>ALL DIMENSIONS CAN VARY ± 0.03 (0.375)</small>	<input checked="" type="checkbox"/> CONTROLLED DRAWING	<b>CLARKE®</b> <b>INSTALLATION DRAWING, DQ6H-FMKA ENGINES W/ TSP-M PANEL</b>
	<small>DATE</small> JAUGENSTEIN <small>DATE</small> 11/20/2024 <small>ENGINEER</small> JAUGENSTEIN	<small>NAME</small> <small>PART NO.</small> UD224
	<small>ASSEMBLY</small> INSTALLATION DRAWING <small>SCALE</small> NTS <small>UNITS</small> MM [INCH]	<small>REV</small> A <small>PAGE</small> 2 OF 2
	<small>SM/ARTO</small> UD181/D899	